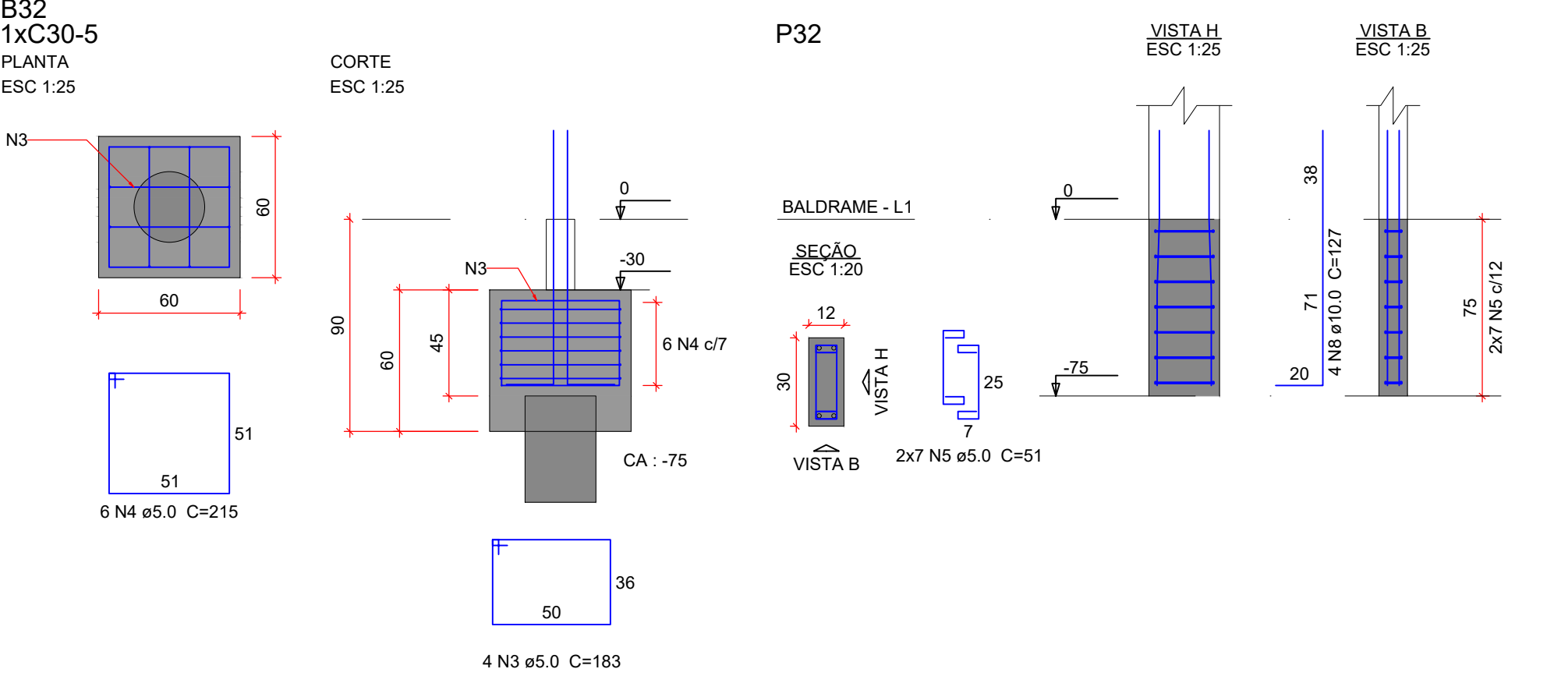
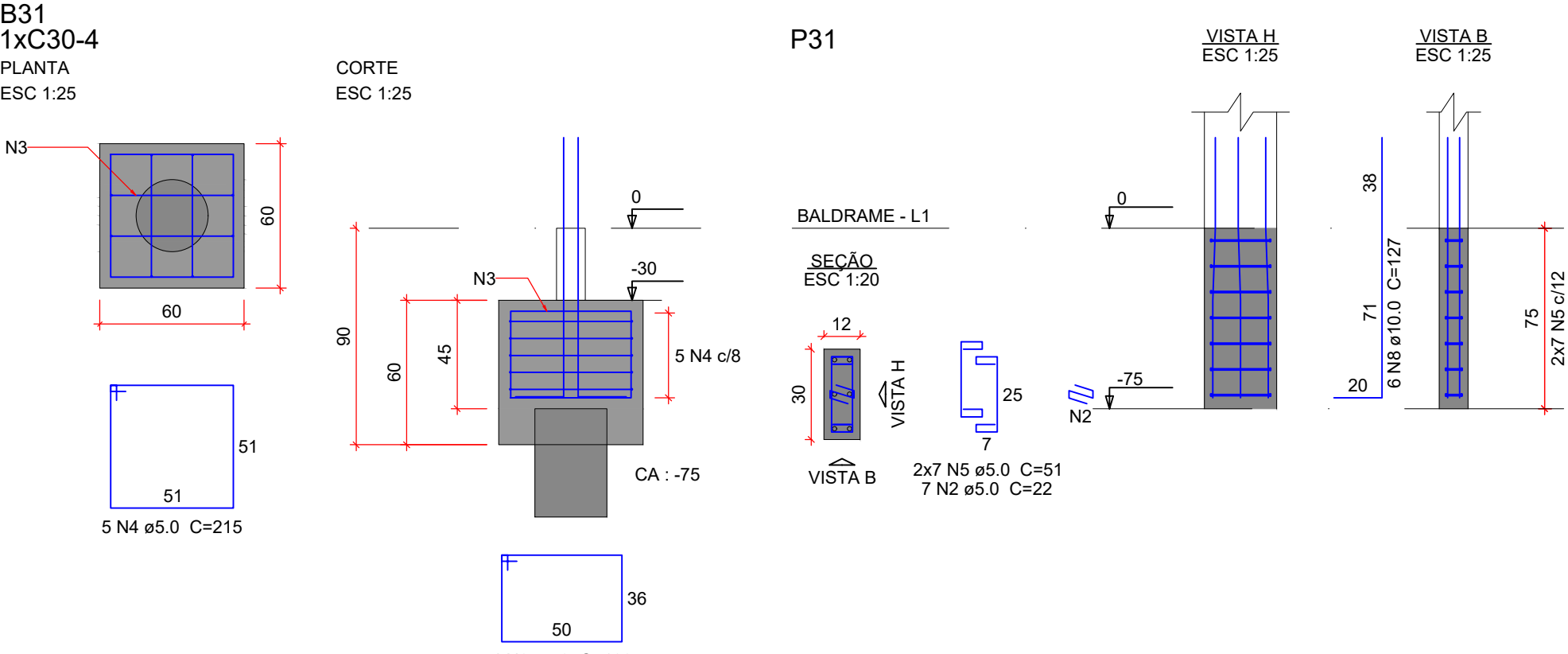
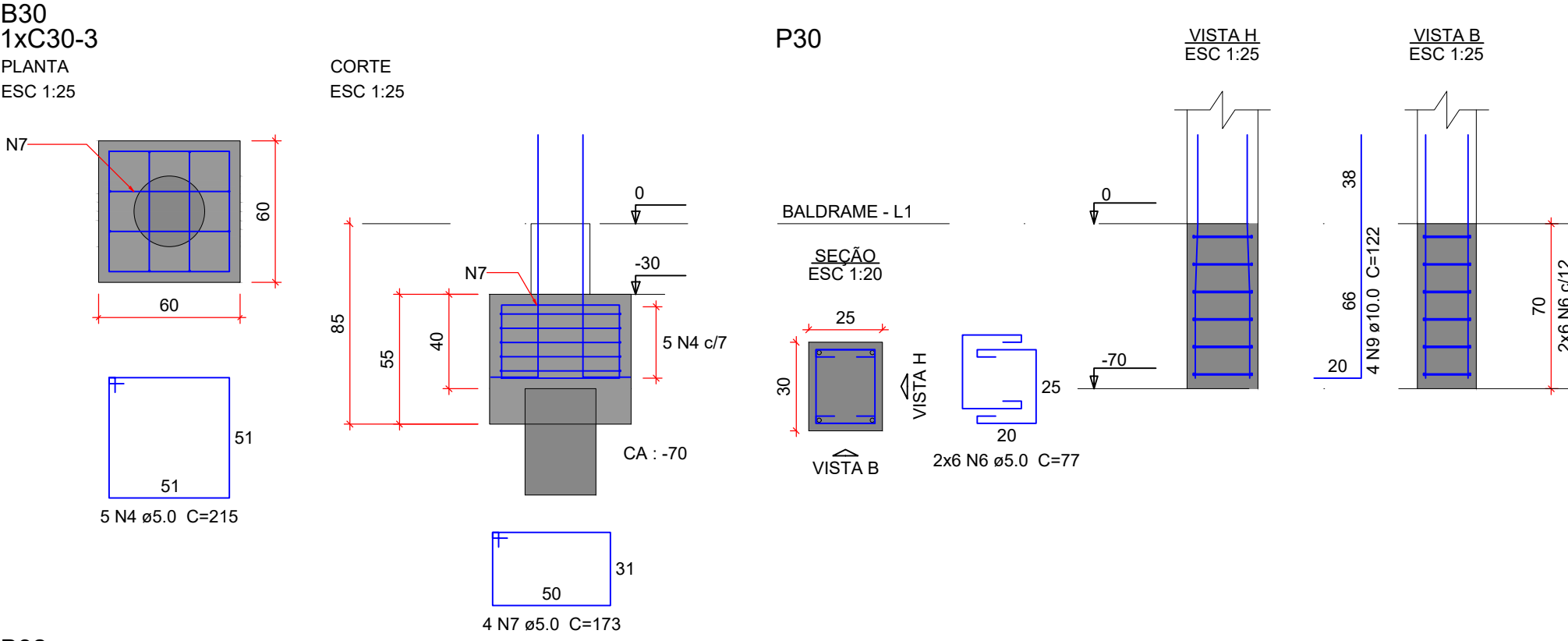


BLOCOS E ARRANQUES Fck = 25MPa



Relação do aço

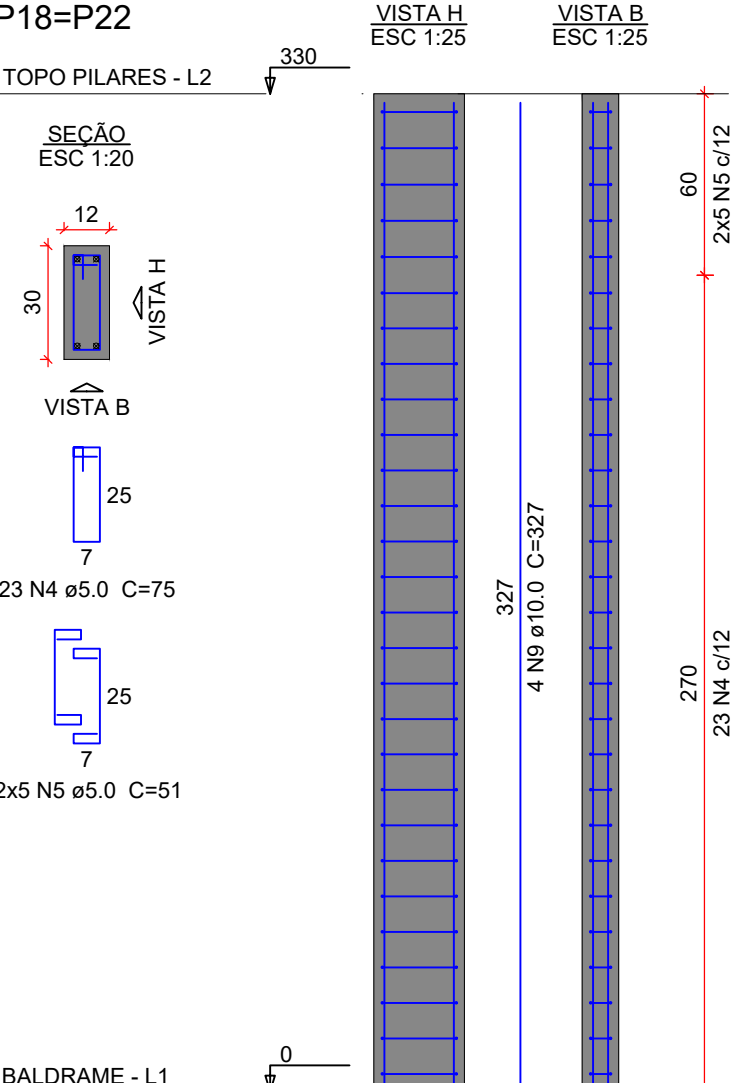
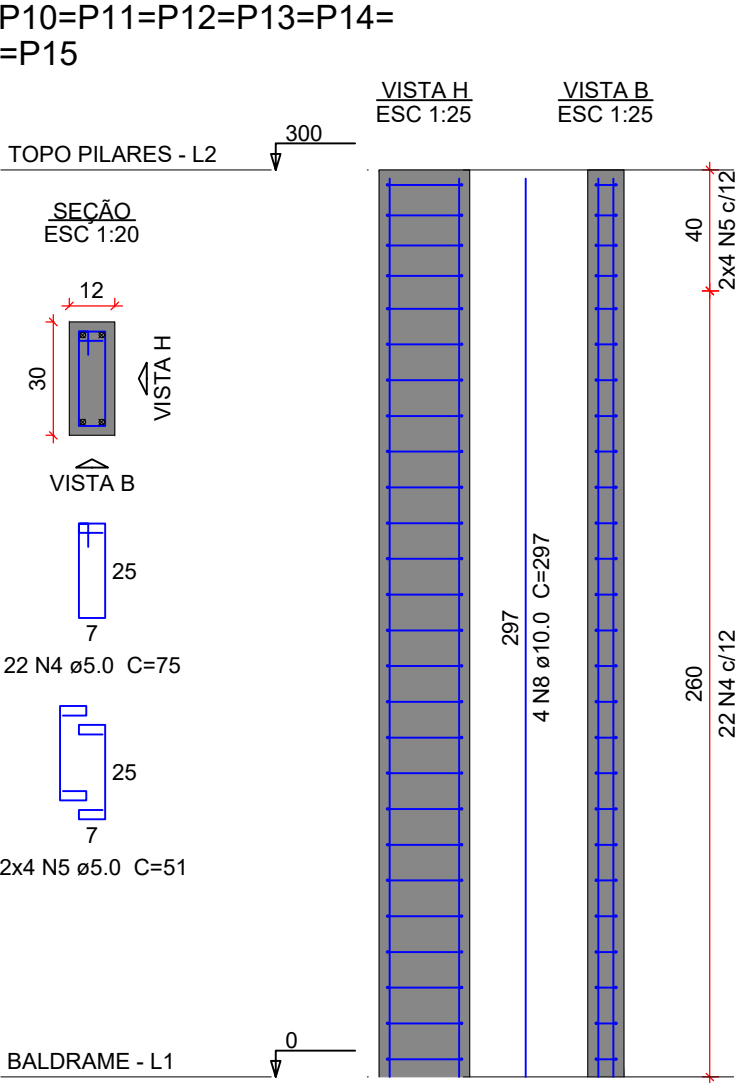
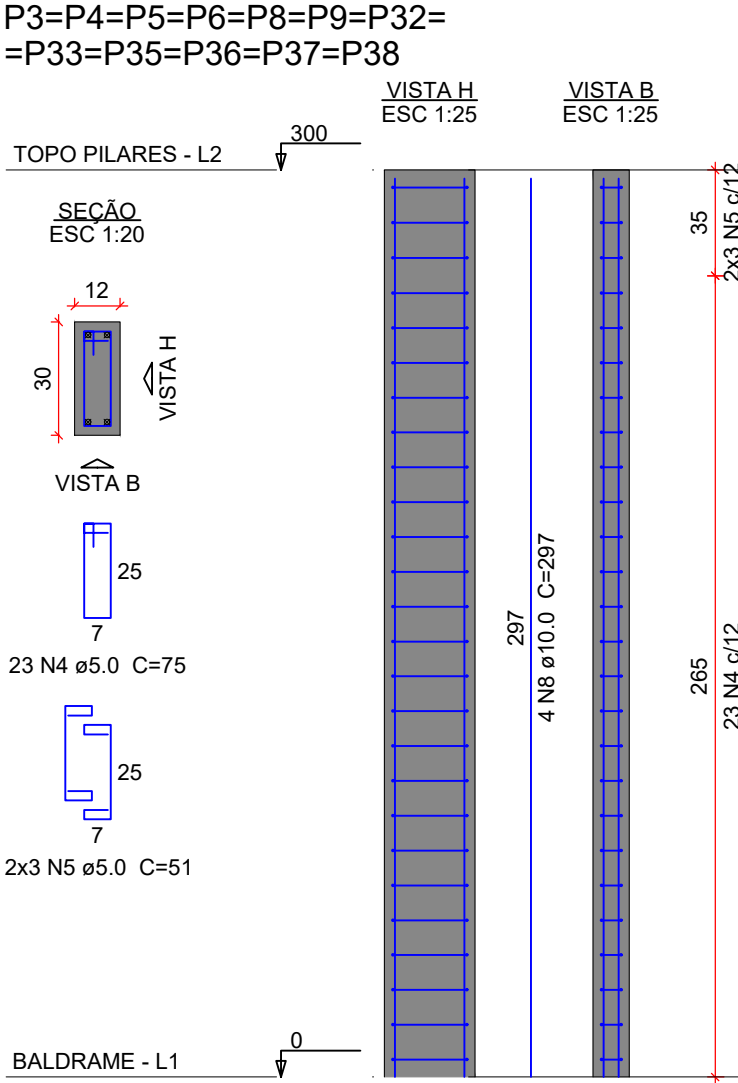
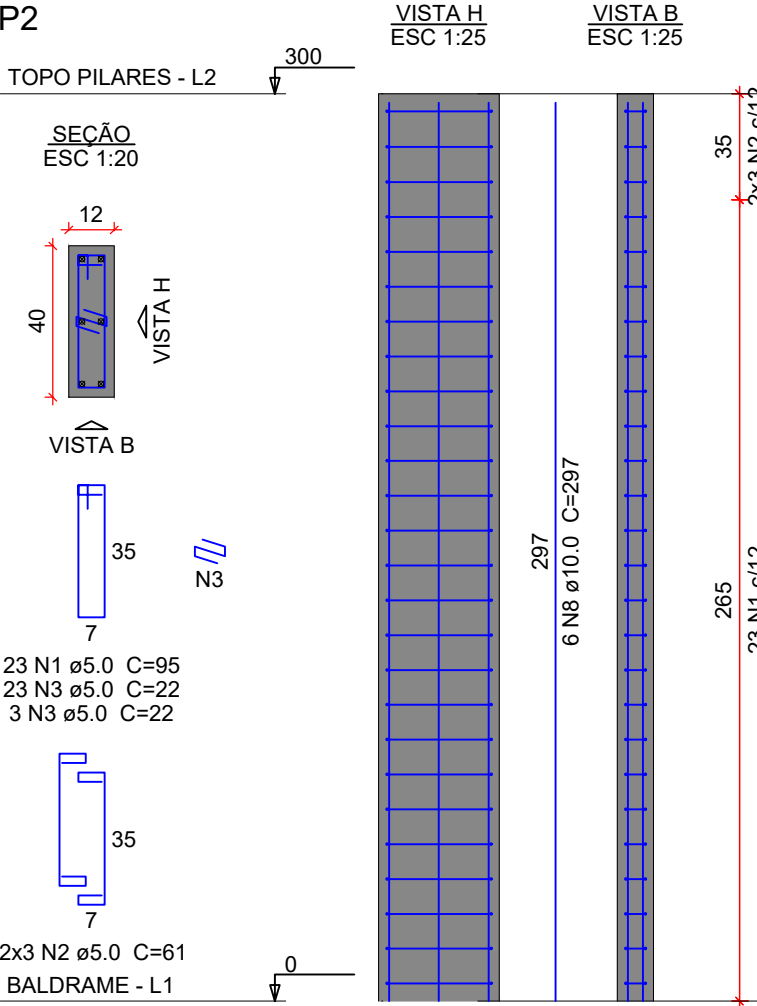
ACO	N	DIAM (mm)	QUANT	C.UNIT (cm)	C.TOTAL (cm)
CA60	1	5.0	14	61	854
	2	5.0	21	22	462
	3	5.0	108	183	19764
	4	5.0	141	215	30315
	5	5.0	364	51	18564
CA50	6	5.0	12	77	924
	7	5.0	4	173	692
	8	10.0	114	127	14478
	9	10.0	4	122	488

Resumo do aço

ACO	DIAM (mm)	C.TOTAL (m)	PESO + 10 % (kg)
CA50	10.0	149.7	101.5
CA60	5.0	715.8	121.4
PESO TOTAL (kg)			
CA50		101.5	
CA60		121.4	

Volume de concreto (C-25) = 6.05 m³
Área de forma = 47.39 m²

PILARES Fck = 25MPa



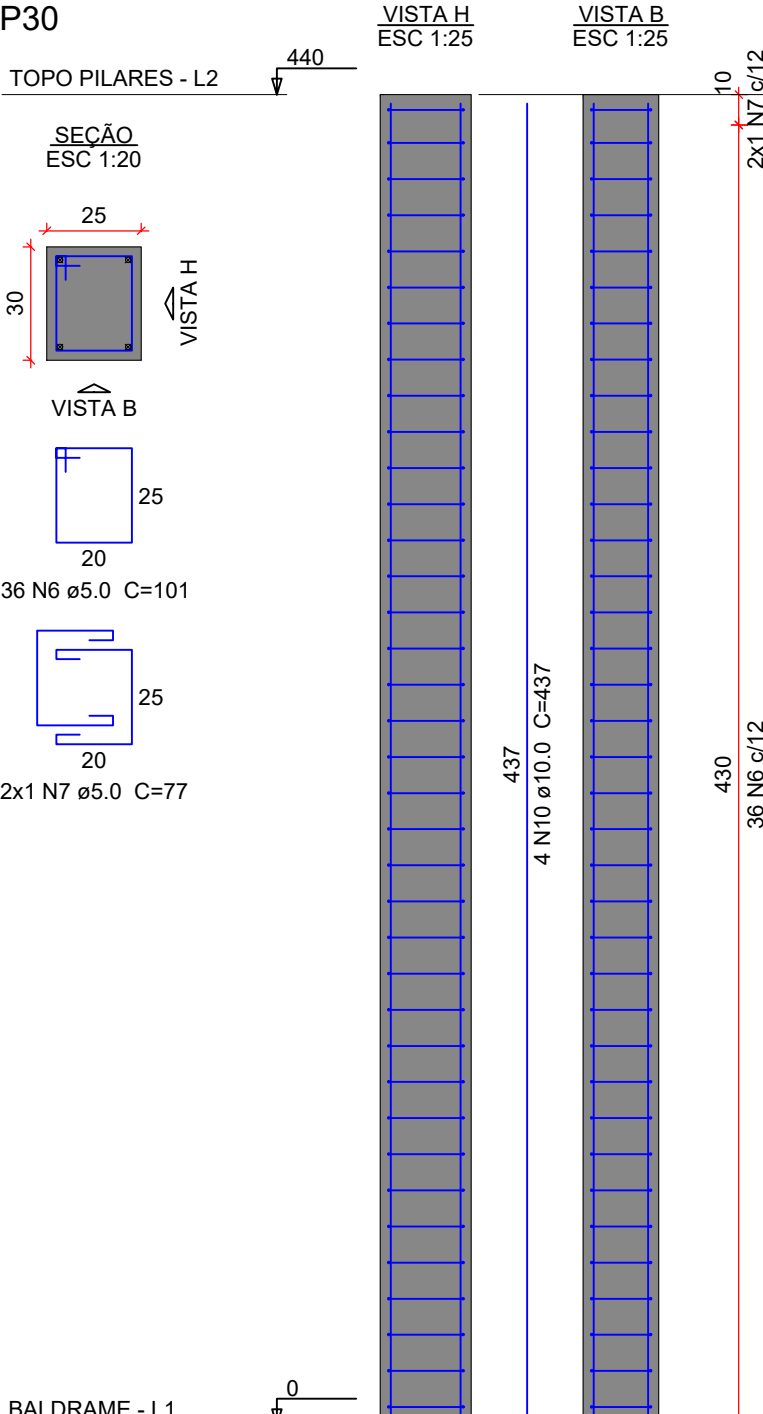
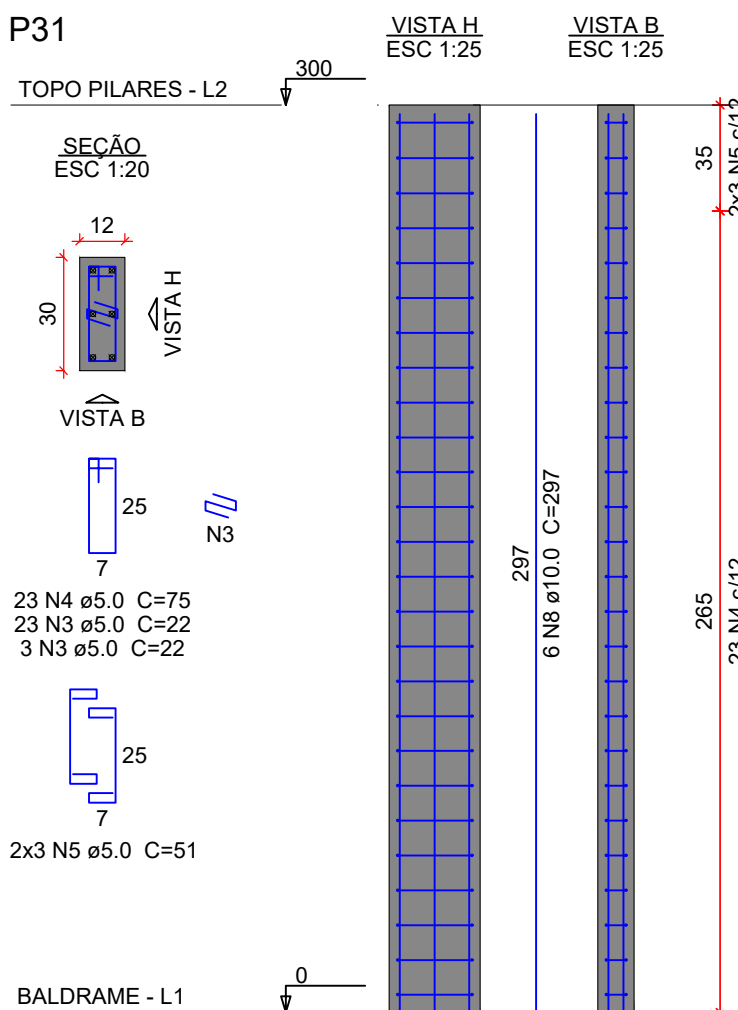
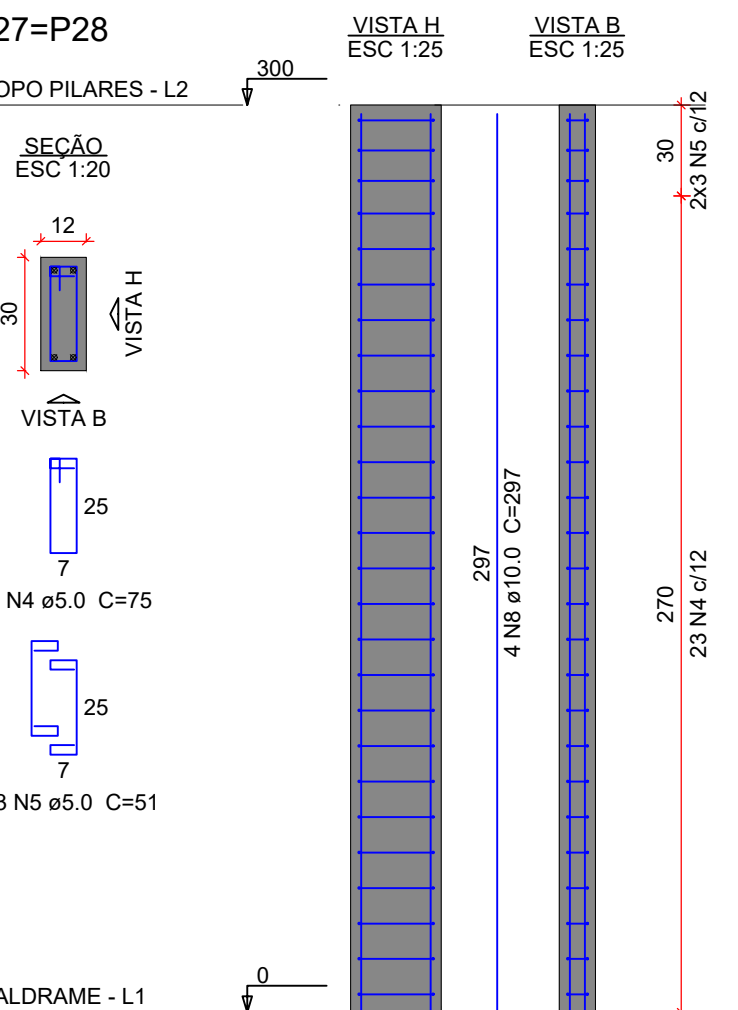
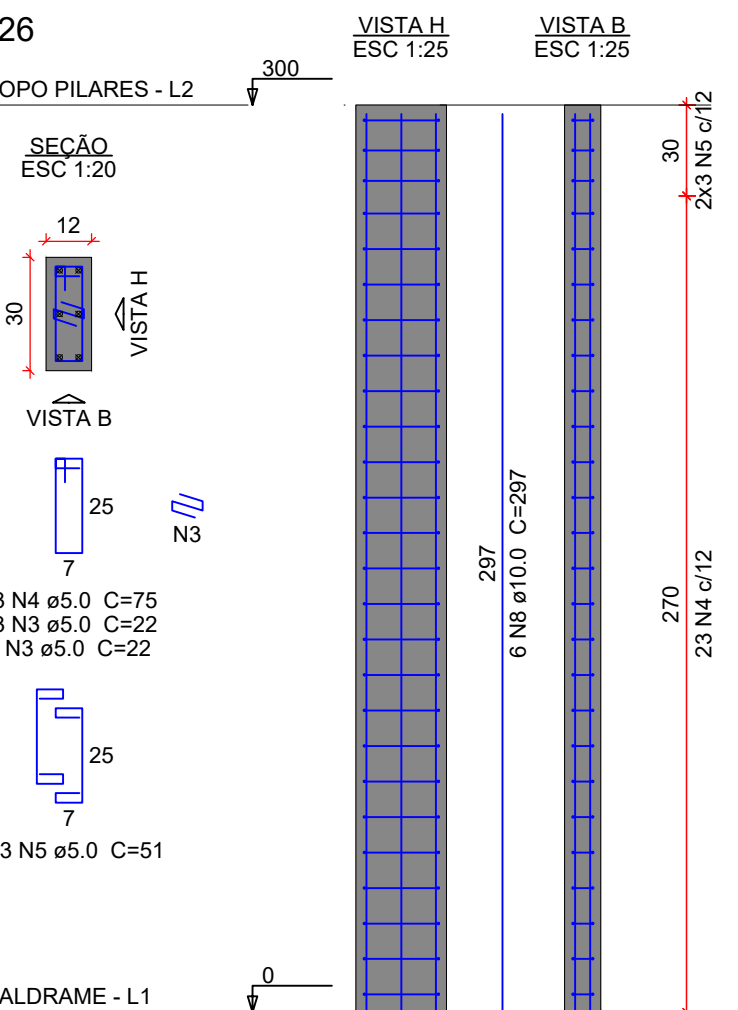
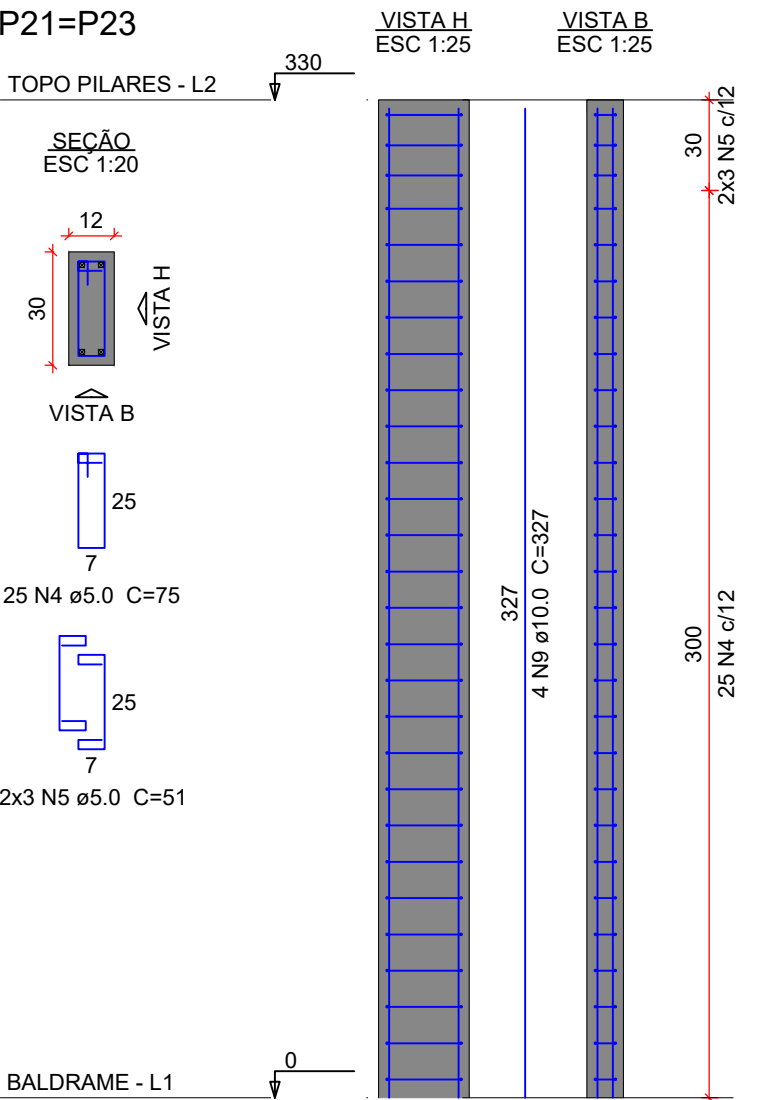
Relação do aço

ACO	N	DIAM (mm)	QUANT	C.UNIT (cm)	C.TOTAL (cm)
CA60	1	5.0	23	95	2185
	2	5.0	6	61	366
	3	5.0	78	22	1716
	4	5.0	596	75	44700
	5	5.0	176	51	8976
CA50	6	5.0	36	101	3636
	7	5.0	2	77	154
	8	10.0	98	297	29106
	9	10.0	16	327	5232
	10	10.0	4	437	1748

Resumo do aço

ACO	DIAM (mm)	C.TOTAL (m)	PESO + 10 % (kg)
CA50	10.0	360.9	244.7
CA60	5.0	617.4	104.7
PESO TOTAL (kg)			
CA50		244.7	
CA60		104.7	

Volume de concreto (C-25) = 3.33 m³
Área de forma = 74.49 m²



ORGÃOS PÚBLICOS

PROJETO ESTRUTURAL

TIPO DE EMPREENDIMENTO	DATA
PÚBLICO	OUT/2025
CONTEÚDO	PRANCHA
BLOCOS E ARRANQUES	03/07
PILARES	



PREFEITURA DO MUNICÍPIO DE MERCEDES
DEPARTAMENTO DE ENGENHARIA

RUA DR. OSVALDO CRUZ, 555 CEP 85998-000 MERCEDES-PR FONE: (45) 3256-8045

PROJETO:	ENG. CIVIL CRISTIAN COMIN CREA: PR -214577 / D
EXECUÇÃO:	
PROPRIETÁRIO:	MUNICÍPIO DE MERCEDES CNPJ: 95.719.373/0001-23

OBRA: BARRAÇÃO PRÉ-MOLDADO - 240M2
LOCAL: ESTRADA VICINAL RURAL DA LINHA SANGA ALEGRE - LOTE RURAL 56/B - 38° PER.
- MERCEDES / PR
PROPRIETÁRIO: MUNICÍPIO DE MERCEDES